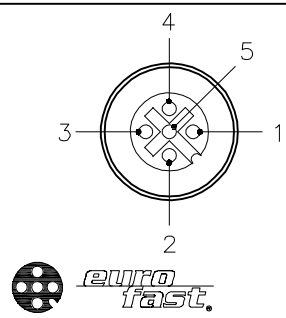
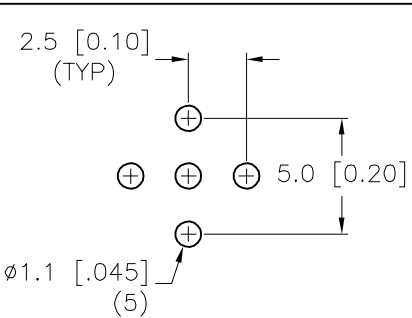
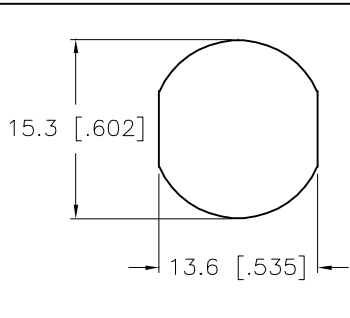
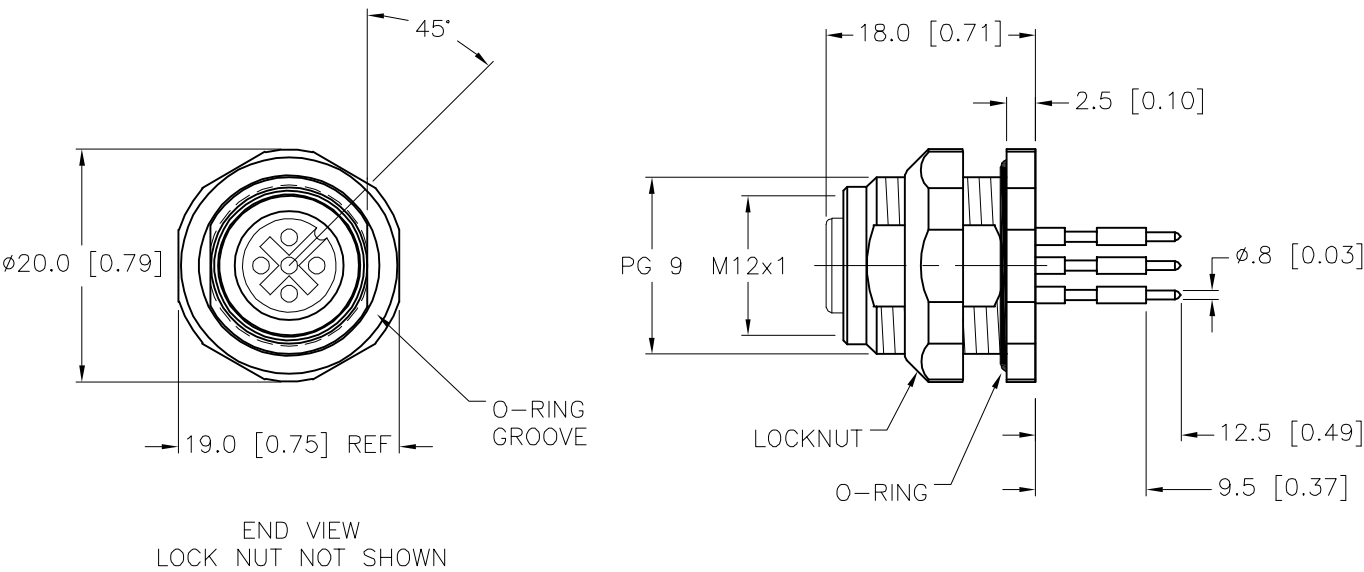




FEMALE END VIEW	BOARD LAYOUT	TYPICAL PANEL CUTOUT	SPECIFICATIONS	
			CONTACT CARRIER MATERIAL	NYLON OR TPU
			CONTACT MATERIAL/PLATING	BRASS/GOLD
			RATED CURRENT [A]	4.0 A
			RATED VOLTAGE [V]	250 V
			HOUSING, LOCKNUT MATERIAL/FINISH	STAINLESS STEEL/PASSIVATED
			NUMBER OF CONDUCTORS [AWG]	5 PRINTED CIRCUIT PINS
			TEMPERATURE RATING	-30°C to +80°C (-22°F to +176°F)
			PROTECTION CLASS	MEETS NEMA 1,3,4,6P AND IEC IP68
			MAX. PANEL THICKNESS	3.0 [0.12]



SOURCE DRAWING - FOR REFERENCE ONLY

<div>RELATED DOCUMENTS</div> <div>1.</div> <div>2.</div> <div>3.</div> <div>4.</div>					<div>3RD ANGLE PROJECTION</div> <div></div>		<div>THIS DRAWING IS CONFIDENTIAL AND THE PROPERTY OF TURCK INC. USE OF THIS DOCUMENT WITHOUT WRITTEN PERMISSION IS PROHIBITED.</div>		<div>3000 CAMPUS DRIVE MINNEAPOLIS, MN 55441 1-800-544-7769 (763) 553-7300 (763) 553-0708 fax www.turck.us</div> <div></div>				
					<div>MATERIAL</div> <div>SEE SPECIFICATIONS</div>		<div>ALL DIMENSIONS DISPLAYED ON THIS DRAWING ARE FOR REFERENCE ONLY</div> <div>CONTACT TURCK FOR MORE INFORMATION</div>		<div>DRFT</div> <div>RDS</div>	<div>DATE</div> <div>11/15/12</div>	<div>DESCRIPTION</div> <div>FKFDV 4.5</div>		
									<div>APVD</div> <div>E.S.</div>	<div>SCALE</div> <div>1=.7</div>			
									<div>FINISH</div> <div>SEE SPECIFICATIONS</div>		<div>UNIT OF MEASUREMENT</div> <div>MILLIMETER [INCH]</div>		
<div>DO NOT SCALE THIS DRAWING</div>			<div>FILE: U2-21068</div>		<div>SHEET 1 OF 1</div>								
<div>B</div>	<div>NOTATE THE KEYWAY IS 45° FROM THE MOUNTING FLAT</div>		<div>RDS</div>	<div>04/25/22</div>	<div>77572</div>								
<div>REV</div>	<div>DESCRIPTION</div>			<div>BY</div>	<div>DATE</div>	<div>ECO NO.</div>							